

New train stations for Drury and Paerata

June 2021



Work is underway by KiwiRail and Auckland Transport to progress the new train stations for Drury and Paerata. Along with park and ride facilities, bus connections and walking and cycling paths, the new stations will make it easier for residents to travel by public transport.

As part of the Government's [New Zealand Upgrade Programme](#), KiwiRail is delivering the new stations and plans for their initial construction are being finalised.

What we heard from you and what's happening next

Community feedback has been an important part of getting to where we are now.

During May and June 2020 we shared the preferred options for station locations and asked for your feedback.

More recently, during February and March 2021 we asked you to tell us what you thought about the facilities we're proposing for each of the stations – things like bus connections, park and rides, cycling paths and ways to access the stations. We've summarised what we heard below.



197

pieces of feedback received



123

comments on the Supporting Growth Social Pinpoint page



84

information packs posted and emailed to property owners



76

completed feedback forms



2,391

flyers delivered to the local community



16

landowner meetings



4,892

website visits



140

people attended our public drop-in and online webinar events

Thank you for taking the time to have your say.



COVID-19 changed how we could engage with you

With Auckland's COVID-19 restrictions in February, we switched to zero-contact ways to engage with the community. Unfortunately we had to replace our February public drop-in events with online webinars but were pleased to be able to meet with the community on 23 March at the Drury Hall to listen to your views.

We heard from...

- Manawhenua
- Property owners and major landholders
- Local Boards
- Community groups
- Ministerial departments
- Transport advocacy groups
- Utility and infrastructure providers
- Local businesses

What we heard - key themes...



Significant support for all three new train stations



Concerns about large park and ride facilities, many would like to see the land used for housing instead of car parking



Strong desire for active transport connections (especially safe walking and cycling paths)

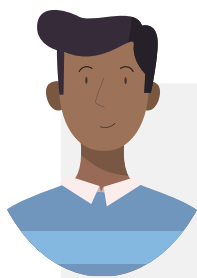


Less support for the location of Paerata station, some would prefer to access the station from the Paerata Rise side of the rail line closer to State Highway 22



Strong support for new and improved public transport options to access the rail network for commuting to / from work

You said - frequently asked questions...



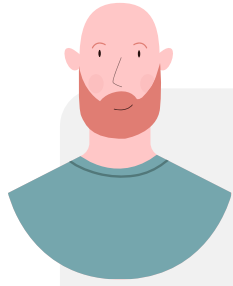
“What are the steps to finalise the locations of the stations?”

Planning and design work, along with property acquisition, will help confirm the land needed for the new stations and their supporting facilities. In the meantime, KiwiRail as owner and manager of the rail corridor has applied for the Drury Central and Paerata stations to be processed under the COVID-19 Recovery (Fast-track Consenting) Act 2020 to enable work to start on these stations as soon as possible. They will then lodge the Notices of Requirement (designation) to protect the land needed for the construction of the new Drury West station and supporting facilities.



“When will the stations be built?”

KiwiRail, Auckland Transport and Waka Kotahi NZ Transport Agency are considering the timing and sequencing of station construction and how best to use the New Zealand Upgrade funding. The development of the new stations and their associated facilities will be staged over time to coincide with demands from developments feeding each location. Construction is expected to start in 2023 and be completed by 2025. The intention is to build as much as possible in parallel to the project to electrify between Papakura to Pukekohe.



“How are you prioritising public transport?”

The new stations include plans for new public transport connections (including bus interchanges and frequent and reliable bus services) to connect residents in existing and new growth areas with public transport services. KiwiRail is working with Auckland Transport and Waka Kotahi to also investigate active transport connections (walking and cycling paths) adjacent to the railway to ensure everyone has great connections to the station.



“How are you engaging with the community?”

KiwiRail’s Property Team are continuing to meet with landowners to discuss potential impacts to their property. As the project progresses, we will continue to share information with the wider community.

Next steps – funding confirmed for three stations

The Government has confirmed funding for the three stations in the Drury area - Drury Central, Drury West and Paerata as part of the NZ Upgrade Programme announced on Friday 4 June 2021.

As the project moves into the next phase, KiwiRail will now be responsible for the design and construction of the three stations.

The project team will continue engaging with Iwi and stakeholders on the design for the stations. Discussions with directly affected property owners are ongoing while work continues on the necessary planning approvals (consents and designations).

Construction is expected to start in 2023 and be completed by 2025. Our intention is to build as much as possible in parallel to the project to electrify between Papakura to Pukekohe.

Indicative timeline for new train stations



Keeping you informed

We look forward to sharing this exciting journey with you.

We'll continue to provide updates and talk with property owners, stakeholders and the community as the project progresses.

We're still working on the design for the stations and will update you later in the year as this work is finalised.

Find out more about the new stations and subscribe to regular e-updates at www.supportinggrowth.govt.nz

Contact us

P 0800 4769 255 (GROW AKL)
E info@supportinggrowth.govt.nz
W supportinggrowth.govt.nz